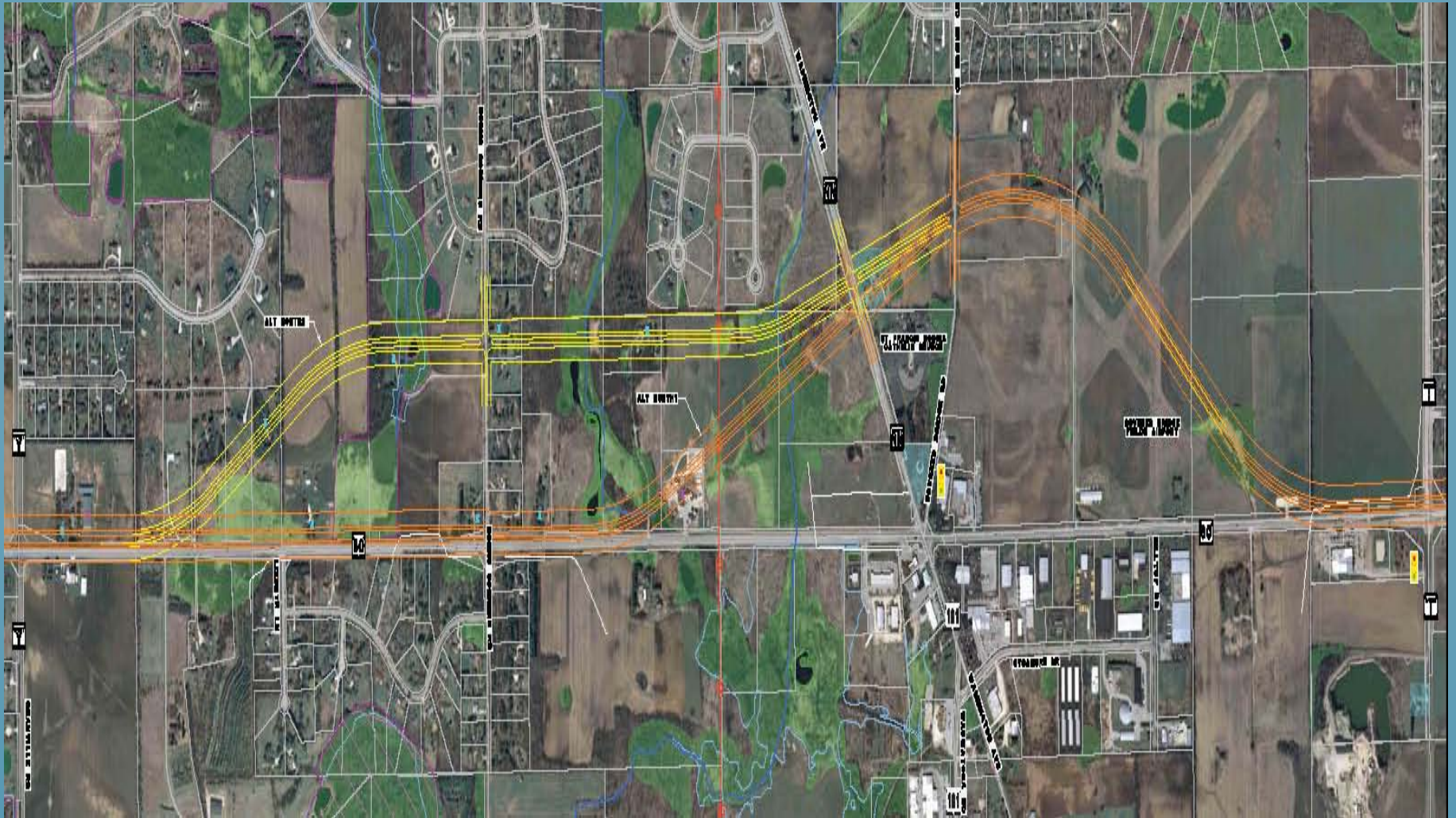


**WIS 60 CORRIDOR STUDY**

**A PRESENTATION TO THE  
OZAUKEE ECONOMIC  
DEVELOPMENT - BOARD OF  
DIRECTORS**

*Town of Cedarburg  
Jim Culotta, Administrator  
February 21, 2013*

# WISDOT'S BYPASS OPTIONS



# TOWN OPPOSITION

Town Board adamantly opposes WisDOT's bypass options and excessive right-of-way because it would:

- Destroy/displace dozens of homes & businesses
- Diminish our open spaces
- Dilute the historic rural character of our community
- Devastate existing businesses in the Five Corners Business District and reduce the prospects for future development”
- Have a detrimental impact on the Town's tax base and in turn indirectly affect all property owners

# TOWN BUSINESS PERSPECTIVE

“We can not afford to lower our exposure by having a bypass around the 5 Corners area.”

The bypass “will make me pause about hiring, or expanding my business.”

“Ultimately a by pass could kill the retail section of the 5 Corners.”

“everyday exposure is invaluable to all the local businesses.”

It would be “a significant loss to my business if traffic was diverted away from my location.”

“keep Hwy 60 where it is”

“building a Hwy 60 bypass would be a bad idea.”

“I count on the traffic for my location and that was one of the most important things that led me to Hwy 60”

# WHY CITY OF CEDARBURG & OZAUKEE COUNTY OPPOSE?

## City of Cedarburg

Resolution 2012-18

- “the bypass options will **halt development** plans in the Town of Cedarburg’s Business District”
- “oppose WisDOT’s bypass alternatives for the WIS 60 corridor” and urge “improvements along the existing alignment”

## Ozaukee County

Resolution 12-55

- “the two bypass options will have a **deleterious effect on the businesses** that currently exist in the WIS 60 corridor”
- “oppose WisDOT’s preliminary alternatives for the WIS 60 corridor, including the bypass options and excessive right-of-way expansion”
- “recommends using the current alignment/route”

# THE TOWN PROPOSES

- Use the current alignment/route and limiting to and centered on the current right-of-way.
- Keep widening to a minimum.
- Eliminate huge median, clear zone, and path.
- Consider reducing the speed limit.
- A better design is Mequon Road.
- No Bypass of Five Corners.

